

Commande et signalisation
Operating panels and displays

 **SODIMAS**[®]
ascenseurs




BlueStyle
by SODIMAS

EN 81.70

Du standard au sur mesure

From standard to custom made

Toutes nos boîtes à boutons et afficheurs sont livrés assemblés, prêts à installer.

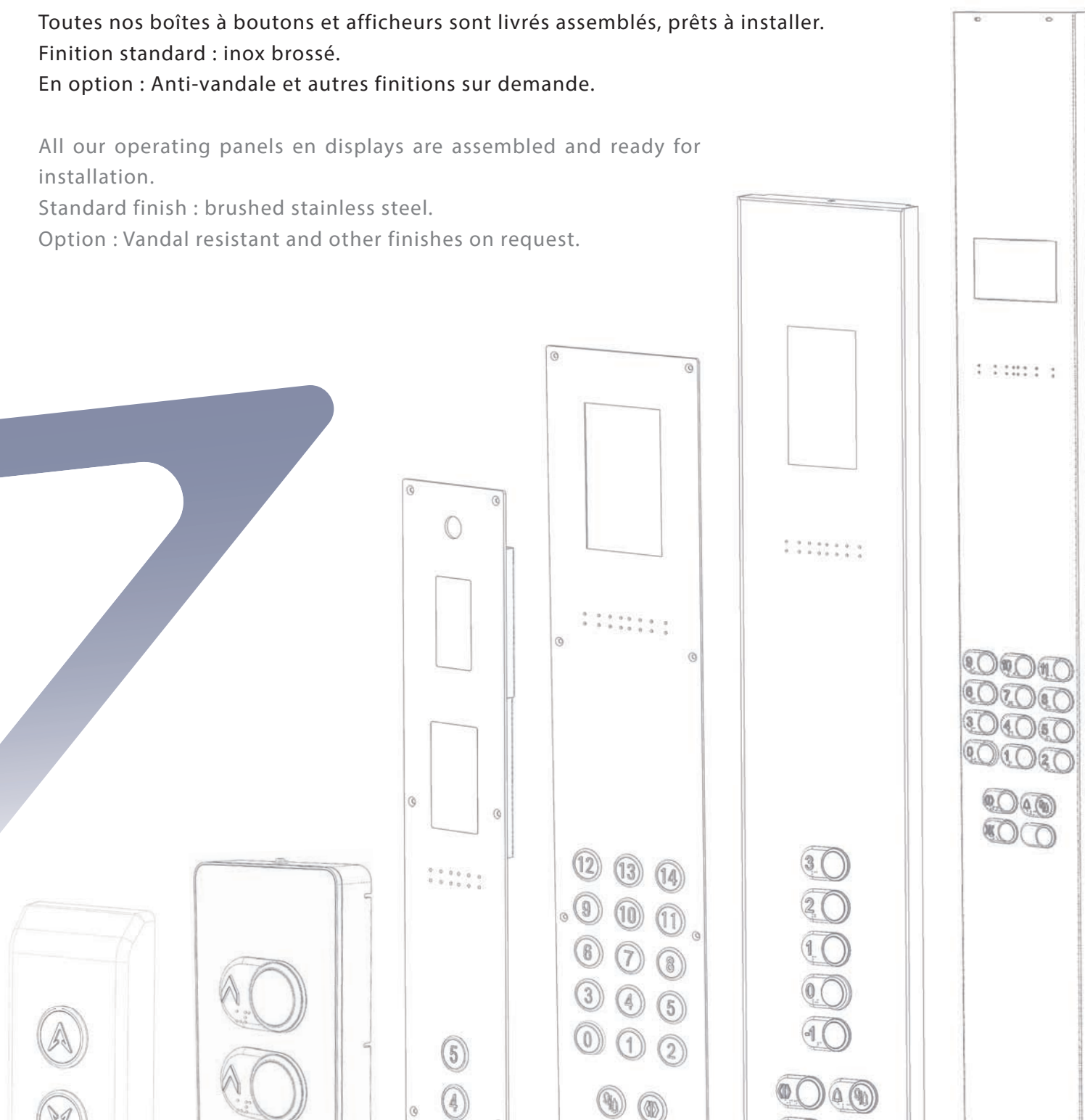
Finition standard : inox brossé.

En option : Anti-vandale et autres finitions sur demande.

All our operating panels en displays are assembled and ready for installation.

Standard finish : brushed stainless steel.

Option : Vandal resistant and other finishes on request.



Série en applique

Surface mounted range

Colonne cabine en applique

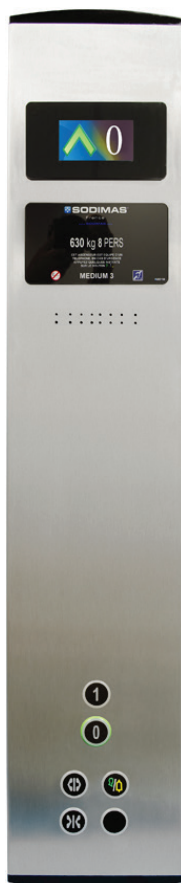
Option : chapeau de finition, profils latéraux lumineux ou profils intégrés à l'habillage, finitions diverses.

Surface mounting Car Operating Panel (COP)

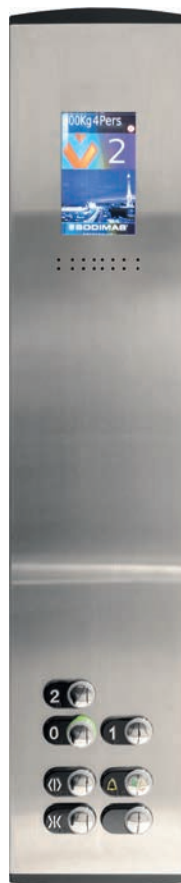
Option : top cover lighting profiles or aluminium profiles, various finishes.



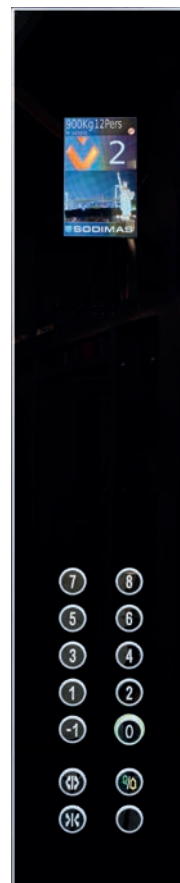
Demi colonne cabine en applique
Half height mounted Car Operating Panel



Inox brossé
Stainless steel



Inox brossé
Stainless steel



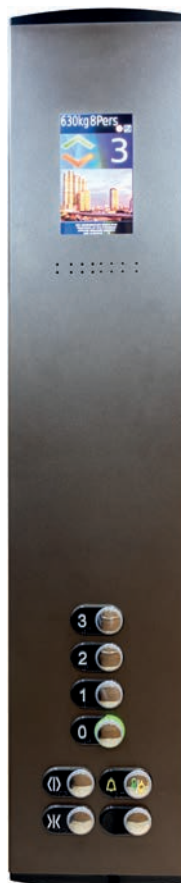
Polycarbonate
Polycarbonate



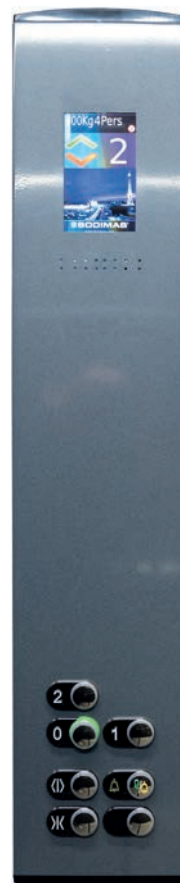
Polycarbonate
Polycarbonate



Inox Palinato
Palinato stainless steel



Epoxy brun sablé
Epoxy powder coated



Epoxy bleu chiné
Epoxy powder coated



Inox poli miroir or
super mirror gold stainless steel

Plastron palier en applique

Landing fixtures surface mounted

Blackpad



Inox Stainless steel



S'box



Série encastrée

Flush mounted range

Plastron cabine encastré

Flush mounted Car Operating Panel



Plastron palier encastré ***Flush mounted Landing Operating Panel***

Inox brossé

Fixation vis ou goujons.
Autres finitions en option.

Brushed stainless steel

Fastening screws or studs.
Other finishes available as on option.



S'box encastré

Fixation par clips.

Flush S'box

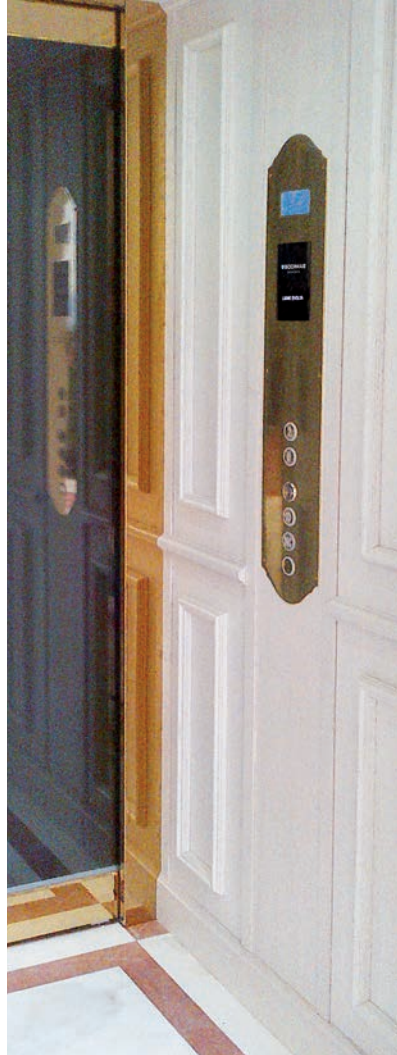
clip fixing.



Boîte à boutons sur mesure Custom made Car Operating Panel



Colonne, inox noir
Black stainless steel column



Plastron type rétro,
inox poli miroir or
Super mirror
stainless steel
gold color
"Retro" style plate



Plastron cabine ou palier
tous types de formes
Car or landing plate with
various shapes available



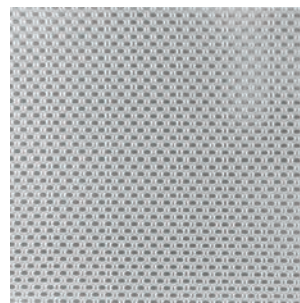
Finitions Finishes



Inox brossé
Brushed stainless
steel



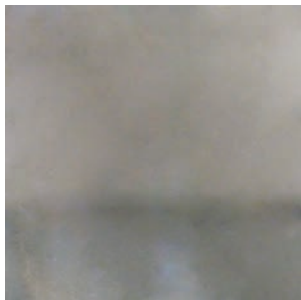
Inox gravé
Engraved stainless steel



Inox lino
Linen pattern
stainless steel



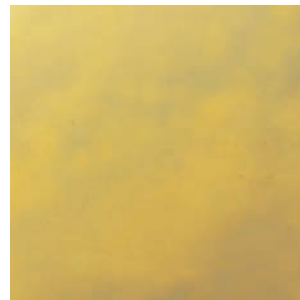
Inox brossé ton or
Brushed stainless
steel gold color



Inox poli miroir chromé
Super mirror
stainless steel
chrome color



Inox poli miroir noir
Super mirror
stainless steel
black color



Inox poli miroir or
Super mirror
stainless steel
gold color

(Autres finitions sur demande)
(Others finishes on request)



Boîte à boutons cabine horizontal gamme XL

Car Operating Panel Horizontal XL range



Normes EN 81-70
EN 81-70 standards

Plastron cabine horizontal

Conforme norme 81-70 annexe G.
Finition inox brossé.
Ø bouton : 56 mm

Horizontal COP

Complies with 81-70 standards appendice G.
Brushed stainless steel finish.
Button Ø : 56 mm



Plastron palier applique

Conforme norme 81-70 annexe G.
Finition inox brossé.
Ø bouton : 56 mm
Fixation : vis



Surface mounted landing push button

Complies with 81-70 standards appendice G.
Brushed stainless steel finish.
Button Ø : 56 mm
Fixing : screws

Boîte à boutons cabine IP54

Car Operating Panel IP54 protection



Plastron cabine encastré

Conforme norme 81-70 annexe G - Finition inox brossé.
Ensemble IP54 avec boîtier de protection arrière.
Ø bouton : 39 mm

Flush mounted Car Operating Panel

Complies with 81-70 standard appendice G - Brushed stainless steel finish.
IP54 panel with back cover assembly.
Button Ø : 39 mm

Plastron palier encastré

Conforme norme 81-70 annexe G - Finition inox brossé.
Ensemble IP54 avec boîtier de protection arrière.
Ø bouton : 39 mm
Fixation : vis ou goujons.

Flush mounted landing push button

Complies with 81-70 standard appendice G - Brushed stainless steel finish.
IP54 panel with back cover assembly.
Standard or vandal-resistant assembly.
Button Ø : 39 mm
Fixing : screws or studs.

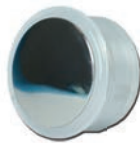


Composants BlueStyle BlueStyle parts



EVOLYA

Colerette relief en braille
Embossed braille ring



Version standard - bouton Angel
Standard version - Angel button
Ø 30,8 mm



Version anti-vandale 81-71 (type 2) - bouton Démon
Vandal resistant 81-71 standard (type 2) - Demon button
Ø 30,8 mm

SYNIA

Repère noir ou chrome en relief
Black or chrome plate independant relief



CYNTRA

Bouton inox : brossé, ton or, noir
Brushed stainless button : steel, gold
and black



Ø 30,8 mm

CYNTRA IPS4

Bouton braille + relief
Embossed braille
button



Ø 39 mm

CYNTRA XL

Bouton braille grande taille
Embossed braille button
large size



Ø 56 mm

SLYMA

Bouton inox slim : ton argent, or
Slim brushed stainless : silver, gold



Ø 34.3 mm

Options

Contact à clé / Key contact :

Version standard
Standard version



Prédisposition canon européen European keyswitch



Version anti-vandale 81-71 (type 2)
Vandal resistant 81-71 standard (type 2)



Version slim
Slim version



Bouton Tumbler Tumbler button



Digicode Keypad



Collerettes Cytra Cytra rings



Pompier
Fireman

Liftier
Lift attendant

Stop

Ventilation
Fan

Plaque pompier Fireman's plate



Plaque logo client Custom made plate



Afficheurs Displays



Afficheur Led Led Display

Afficheur à points / segments bleu
Blue dot / segment display
Dimensions niveaux: 30 mm
Floor indication 30 mm high
Dimensions flèches: 40 mm
Arrows indication 40 mm high

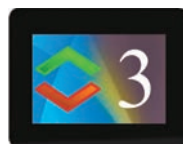


Afficheur TFT 3" 3"Display

Programmable via USB / Programmable by USB

Gongs multi-tons / Multi-tones gong

Dimensions écran affichage / Display size : 47x71 mm



Afficheur TFT 4" 4" Display

Programmable via USB ou WIFI / Programmable by USB or WIFI

Gongs multi-tons / Multi tone gong

Synthèse vocale intégrée / Voice synthesis included

Dimensions écran affichage / Size display : 53x85 mm



Afficheur TFT 7" 7" Display

Programmable via mini USB/SD ou WIFI / Programmable by mini USB/SD or WIFI

Gongs multi-tons / Multi tone gong

Synthèse vocale intégrée / Voice synthesis included

Plaque de charge et instructions intégrées / Instructions text and car load included

Mini serveur web intégré (sans application) / Web server included (without app)

Dimensions écran affichage Size display : 90x150 mm



Flèches Arrows

Module flèche pour montant cabine
Flush plate for car return



Flèches de sens multi-led en relief
Multi-led in relief direction arrows



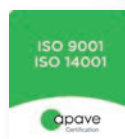
Logos afficheurs Logos



Maintenance	Accès interdit	Surcharge	Complet	Pompier	Liftier	Cellule	Fermeture forcée	Mode secours	Code
Maintenance	No entry	Overload	Full load	Fireman	Lift attendant	Light curtain	Door close	Emergency mode	Code



www.SODIMAS.com



Siège social - Head office
📍 11 rue Ampère
26600 Pont de l'Isère
FRANCE
☎ +33(0)4 75 84 86 00
@ accueil@sodimas.fr