

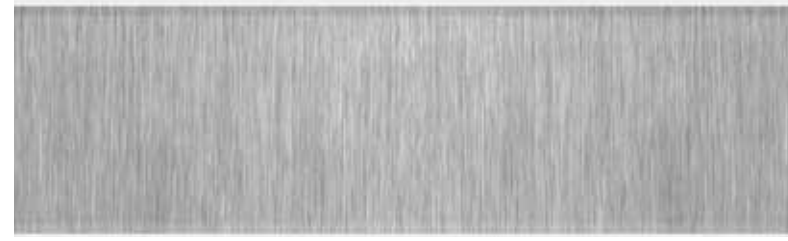
Pre-painted painting



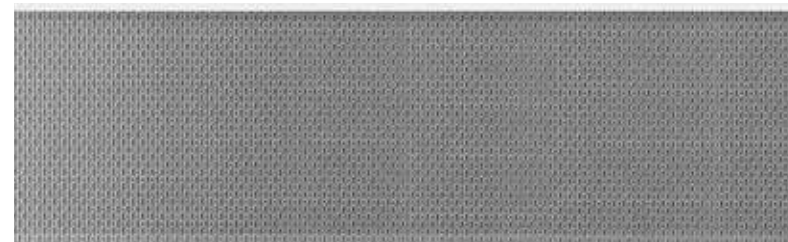
Option
AISI 304 leather
stainless steel (*)



Option
AISI 304 brushed
stainless steel (*)



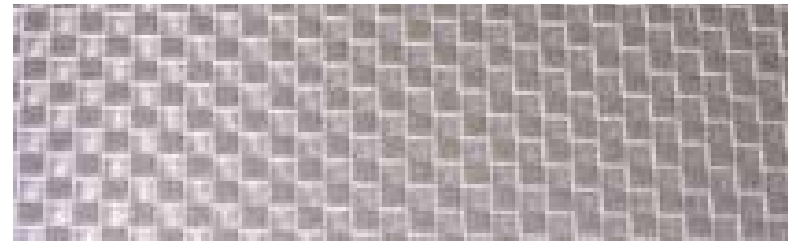
Option
AISI 304 Linen
stainless steel (*)



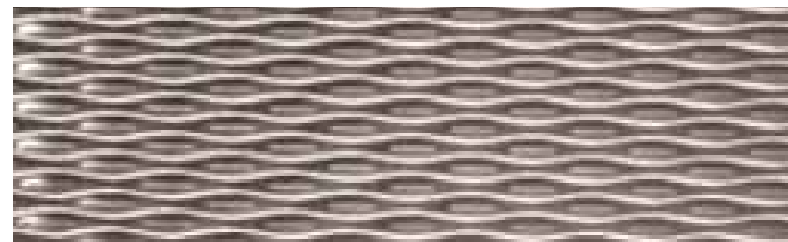
Option
RAL colour



Option
Square
stainless steel (*)



Option
5WL
stainless steel (*)



SLYCMA Creation 2019 - Pictures Fabricer Ferner & SLYCMA - Pictures and illustrations are not contractual. Subject to change without notice. Reproduction, even partial, is prohibited.

To contact us

LYON Head office

4 route du Dôme
69630 Chaponost
Tél. : +33 (0)4 78 86 81 00
slycma@slycma.com

PARIS

34 route de Longjumeau
91380 Chilly Mazarin
Tél. : +33 (0)1 69 79 32 10
magasin.mazarin@slycma.com



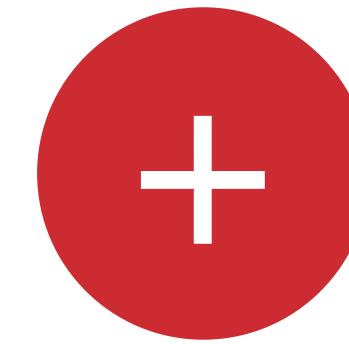
FREIGHT LIFT DOORS



LIFT DOORS



Freight lift doors

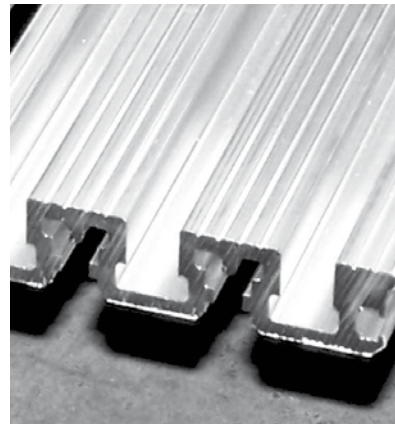
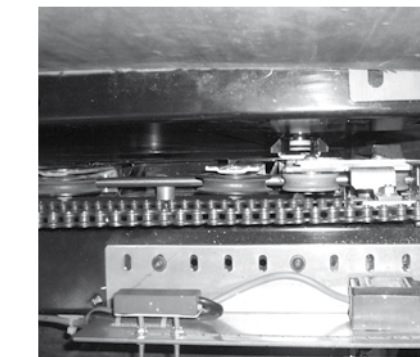


key features

What makes our doors the most suitable solutions for your freight elevators ?

1. The most reliable, silent and robust heavy duty doors.
2. Best components for high traffic and high loads.
3. Best design for large dimensions lifts.
4. Custom made manufacturing following your own needs.
5. Wide range of finishes.
6. Waterproof, Explosion-proof, special features available.
7. Dedicated operators.

EN 81-20
EN 81-21
EN 81-58
EN 81-71
2014/33/UE



GAIA 4 & 6PCO

4 and 6 panel central opening

AUTOMATIC LANDING DOOR

- Sheet thickness 1.5 mm
- Reinforced mechanism with solid steel guide rail
- Mounting plate thickness : 4 mm
- Reinforced door panel
- Panels are linked by counterweight



GAIA 4 & 6PCO

4 and 6 panel central opening

AUTOMATIC CAR DOOR

- Reinforced mechanism with solid steel guide rail
- Reinforced panel thickness 1.5 mm
- Reinforced mounting plate thickness: 3 mm
- Large diameter rollers
- VVVF driving
- Number of annual cycles: > 3,000,000
- Number of starts hours: > 360
- Mechanical locking device
- PM motor
- Belt driven

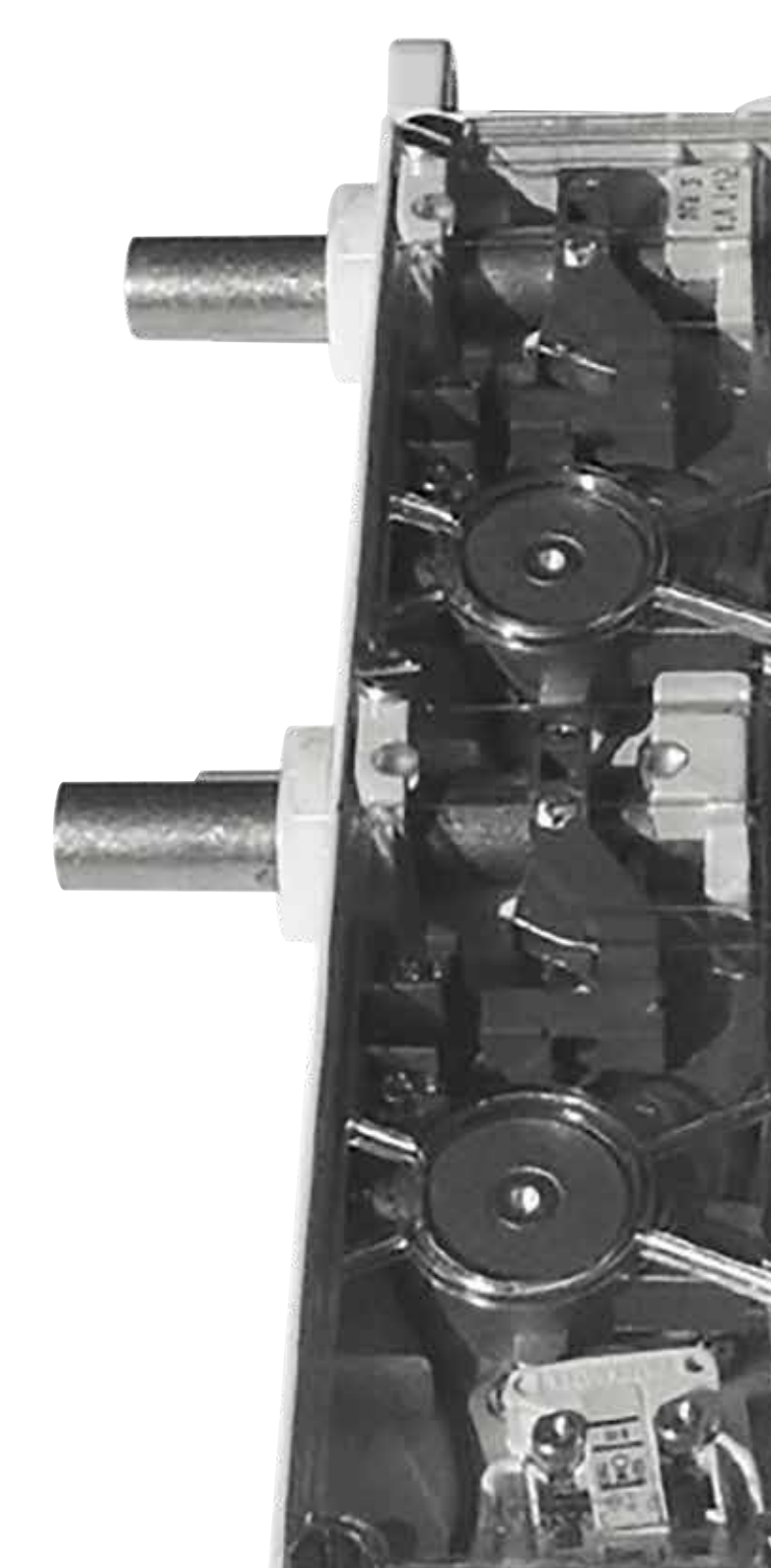
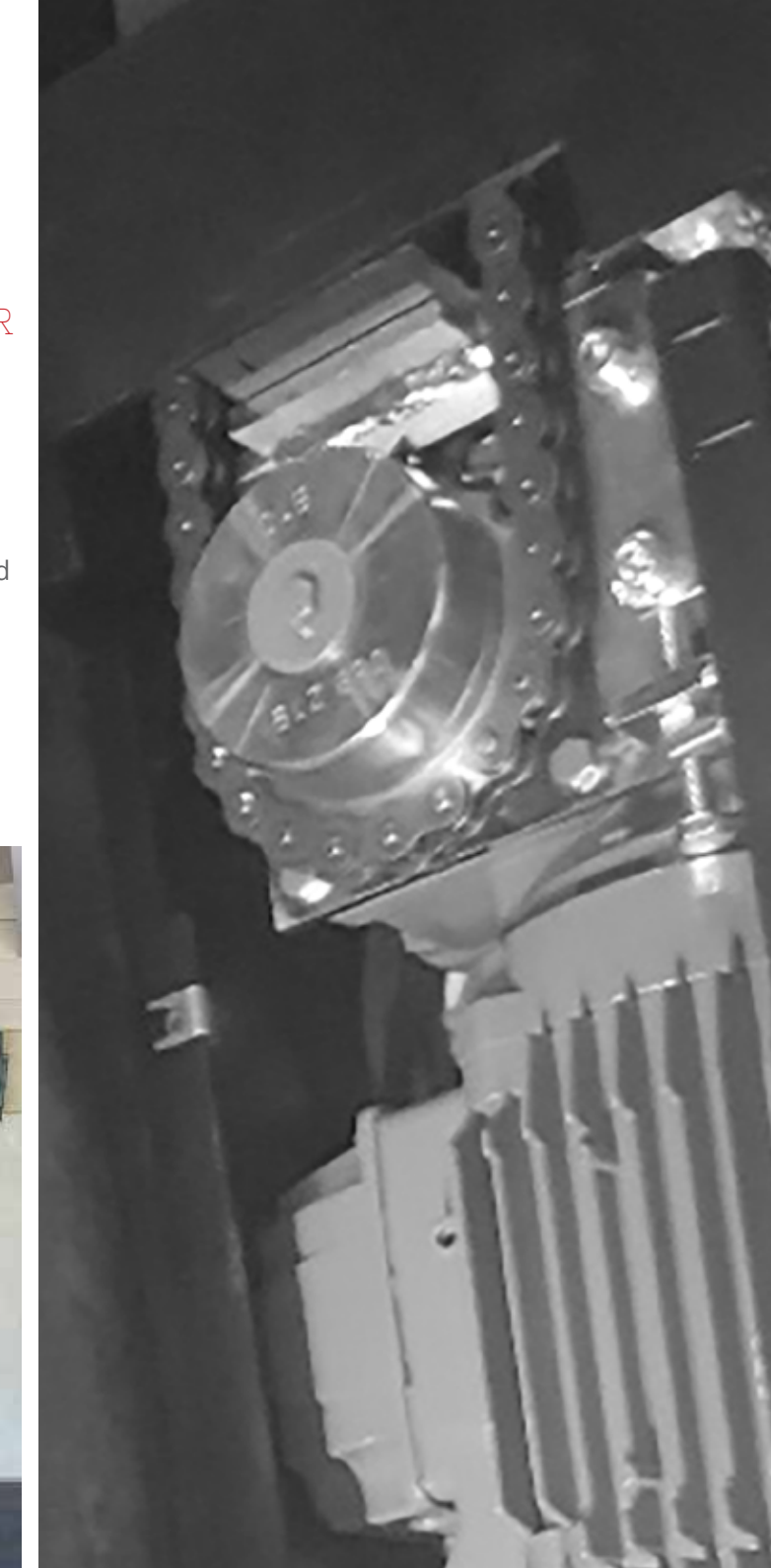


PAC 81 - 85 «S»

Hinged sliding door central opening

HINGED SLIDING LANDING & CAR DOOR

- Sheet thickness 1.5 mm
- 3 or 4 hinges per panel according to height
- Protected sturdy rail
- Strengthened aluminium stiff section or iron sill
- Large plastic rollers on steel pin
- Available in 3 executions : manual, automatic and simultaneous driving
- S-curve available, special designs on request
- Adjustable counterweight for closing return (simultaneous option)
- VVVF driving
- Chain driven



8P 80

2 panel swing door

SEMI-AUTOMATIC SWING DOOR

- Frame : 3 mm - Panels : 2 mm
- Stainless steel cladding not available. Only solid stainless steel option available
- Asymmetric panel available
- Panels available with or without glass vision panel
- Strengthened corner iron sill
- Reinforced hydraulic door closer on each panel
- Dictator door closer on semi-fixed panel
- Panels order closing selection with front shut selector
- Kronenberg DLF2 mechanical or electrical lock
- Driven by every type of operator



4 and 6PCO Automatic landing door dimensions

DIMENSIONS IN MM

	MINI	MAXI
Clear opening (CO)	1000	3000
Height (CH)	1900	3000
Standard header height 200 mm	200	200
Full-front or reduced frame entrance size	150 + 3/2 CO for 4PCO and 150 + 4/3 CO for 6PCO	
Door thickness	200	
Track width	90 for 4PCO	135 for 6PCO

4 and 6PCO Automatic landing door dimensions

DIMENSIONS IN MM

	MINI	MAXI
Clear opening (CO)	1000	3000
Clear height (CH)	1900	3000
Sill width	90	135
Operator dimensions	4PCO : 114 x 440 (depth x height)	6PCO : 160 x 440 (depth x height)
Standard height above drive	CH + 0 to 350	

Landing and car door available

DIMENSIONS EN MM

	Clear opening		Height
	MINI	MAXI	MAXI
Manual - fire-resistant	700	2600	up to 3000
Simultaneous driving - fire-resistant	700	2600	2000
Automatic - not fire-resistant	700	3000	3000

DIMENSIONS IN MM

2 panel swing landing door dimensions

	MINI	MAXI
Clear opening (CO) - 50 mm pitch	1400	2600
Height (CH)	1900	3000
Invisible Hinges	4 per panel	
Header height	145	
Uprights dimensions	110	150