

| | |
|---|-----|
| PMC - DAF Product Description | 60 |
| Performance Matrix | 61 |
| PMC125 S / M / L | 62 |
| PMC145-2 S/XS | 63 |
| PMC145-2 M/XM | 64 |
| PMC145-2 L/XL | 65 |
| PMC170 S - XL | 67 |
| DAF210 M / L | 68 |
| DAF270 S / M / L / XL | 70 |
| Machine Base Frame for PMC - Gearless | 74 |
| Machine Base Frame for DAF - Gearless | 75 |
| Modernisation solution 'Gear to Gearless' | 76 |
| Colouring for all Drives | 100 |

PMC - DAF

Product Description



Performance Matrix

Gearless

Efficient

With our synchronous gearless series (PMC and DAF) one of the most compact drives is available for deployment in energy efficient modernisation / or system solutions, ideally suited for energy recovery. These series stand out as excellent value for money. Excellent efficiencies with low energy consumption.

Safe

A safety brake is used in all gearless drives available from LiftEquip, which is licensed as type-tested safety brake against excessive speed upwards in accordance with EN 81-20/-50. Rope guard acc. to EN 81-77 up to earthquake category 3.

Flexible

The drives can be used both in the shaft (MRL) as well as in the machine room. The arrangement can be configured in 1:1 and 2:1 suspension. A design version of the brake with

a manual venting lever is possible. Another option of the PMC series is a handwheel extension.

Complete

We can provide you with the matching frequency inverter (MFR: with integrated power regeneration; MFC: with braking resistor) in each case for our gearless drives, which feature all of the drive parameters required. In this way we guarantee fast, safe start-up. Optionally in plug&play version with integrated brake control, line filter, line inductor and contactors. In addition, we provide various machine frames, perfectly adapted to these drives. Special designs are available on request.

Smooth running

The traction sheaves we use are precisely manufactured and supplied with hardened grooves. As a result we guarantee you a long service life, low vibrations and an extremely

smooth running drive for your lift.

Compact

The compact design is a significant advantage for using the drives in your systems.

Reliable

Durable, sturdy construction, promising exceptionally long service life and availability and sustainable economic efficiency.

EN 81-20/-50

Our drives meet all requirements with regard to the above standards, in particular the approval of safety brakes and the rope guard.

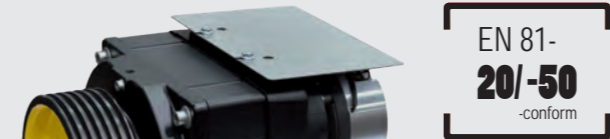
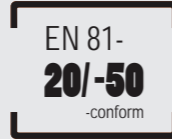
| suspension | | 2:1 | | | | | | | |
|------------|------|------------------------------------|----------|------|------|---------|------|------|-----------|
| m/s | | 1,00 | 1,50 | 1,60 | 1,75 | 2,00 | 2,50 | 3,00 | 3,50 |
| ft/min | | 200 | | | 350 | | 500 | | 700 |
| kg | lbs | | | | | | | | |
| 320 | | PMC...S | PMC145XS | | | PMC | | | |
| 450 | | 145 ¹ /125 ² | | | | 145XL | | | |
| 480 | | PMC...M | PMC145XM | | | / DAF | | | |
| 630 | | 145 ¹ /125 ² | | | 80m | 210M | DAF | | DAF270M |
| 908 | 2000 | PMC...L | PMC145XL | | 80m | DAF | 270S | | |
| 1000 | | 145 ¹ /125 ³ | | | | 210L | | | |
| 1050 | | | PMC170S | | | | | | |
| 1135 | 2500 | | DAF210L | | | | | | |
| 1150 | | | | | | | | | |
| 1250 | | PMC | PMC | | | PMC | | | 135m 100m |
| 1350 | | 170M | 170L | | | 170XL | | | |
| 1362 | 3000 | | | | | | | | |
| 1400 | | | | | | | | | |
| 1590 | 3500 | | | | | | | | |
| 1600 | | | | | | | | | |
| 1650 | | 45m | | | 80m | 80m | 100m | | |
| 1700 | | | | | | | | | |
| 1800 | | DAF | | | | | | | |
| 1816 | 4000 | 270M | | | | DAF270L | | | |
| 1900 | | | | | | | | | |
| 2000 | | | | | | | | | |
| 2042 | 4500 | | | | | | | | |
| 2200 | | | | | | | | | |
| 2250 | | | | | | | | | |
| 2270 | 5000 | | | | | | | | |
| 2400 | | | | | | | | | |
| 2500 | | | | | | | | | |

Travel height data can vary depending on car weight etc. A check with the TLD is necessary.

- 1) PMC145 is designed for 240 Starts/h
- 2) PMC125S/M are designed for 120 Starts/h
- 3) PMC125L is designed for 180 Starts/h

Gearless

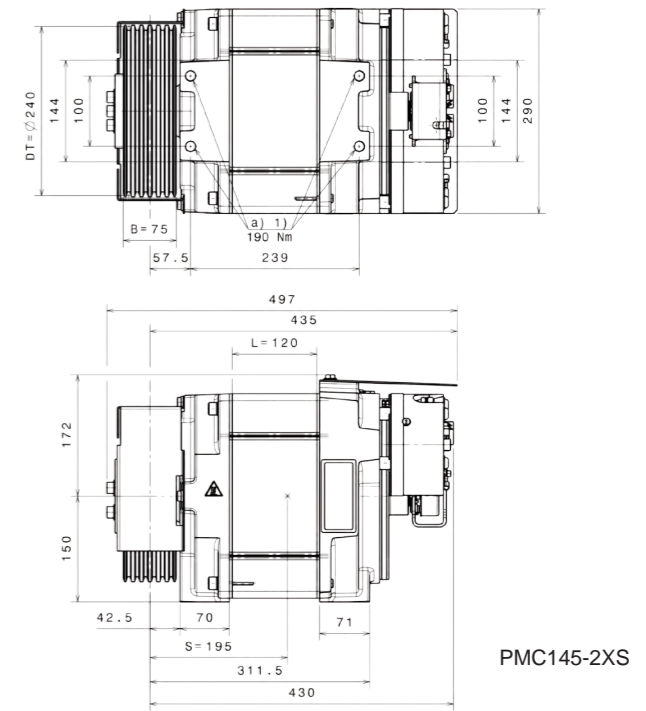
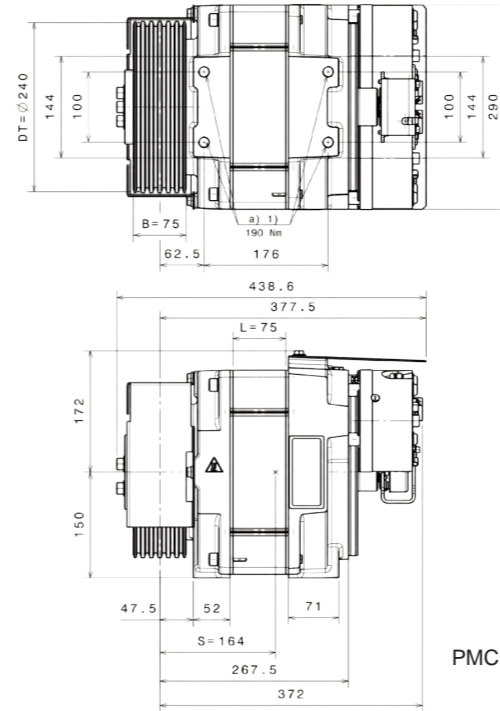
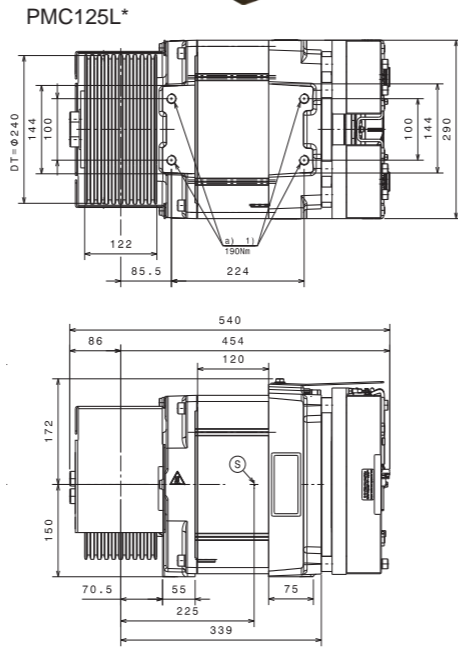
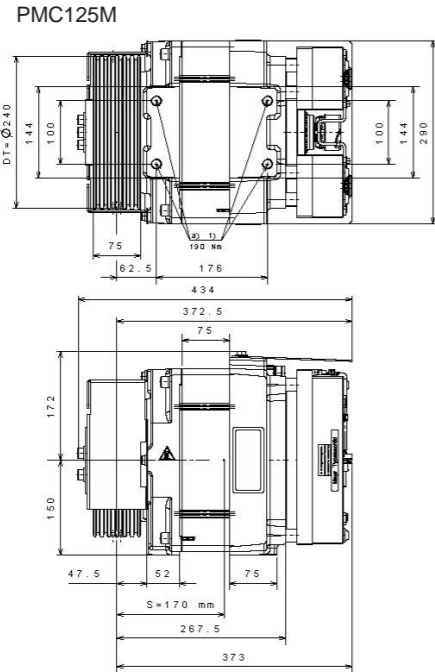
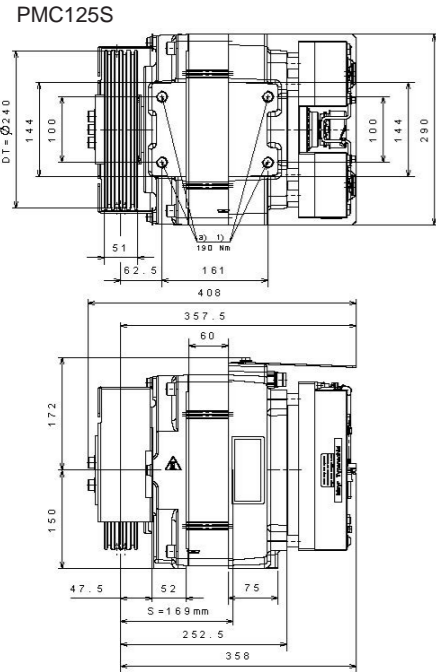
PMC125 S / M / L*



PMC145-2 S/XS

Gearless

Gearless



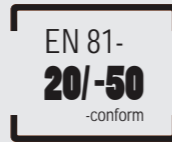
| Technical Data | | | | | | | | |
|--------------------------------------|---------|---|------------|---------|--------------|---------|---------|------|
| Type of machine | | PMC125S001 | PMC125M002 | | PMC125L003* | | | |
| Suspension | r | 2:1 | | 1:1 | 2:1 | | | |
| Rated Load | Q [kg] | 450 / 480 | 480 | 630 | 500 | 750 | 800 | 1000 |
| Rated Speed max. | v [m/s] | 1,0 | | | | | | |
| Diameter of Traction Sheave | DT [mm] | 240 | 320 | 240 | 240 | 320 | 240 | |
| Diameter of Ropes | d [mm] | 6 / 6,5 | 6 / 6,5 | 8 | 6 / 6,5 | 6 / 6,5 | 6 / 6,5 | 8 |
| Number of Grooves max. ¹⁾ | z | 4 | 5 | 4 | 6 | 10 | 7 | 6 |
| Groove type | | seat / vee groove, hardened | | | | | | |
| Rated Power | PN [kW] | 2,8 | 2,9 | 3,8 | 2,9 | 4,4 | 4,7 | 5,9 |
| Rated Torque | MN [Nm] | 170 | 230 | | 350 | 350 | 280 | 350 |
| Permitted radial Shaft Load | [kN] | 13 | 14 | | 25 | | | |
| Weight | [kg] | 127 | 150 | 137 | 204 | | 193 | |
| Number of Switching Operations | | 120 | | | 180 | | | |
| Duty Cycle | % | 40 | | | 50 | | | |
| Rated Current | IN [A] | 7,9 | 10,2 | | 14,6 | 14,9 | 11,9 | 14,9 |
| Output Factor | cos φ | 0,89 | | | 0,91 | 0,91 | 0,93 | 0,91 |
| Braking Torque | [Nm] | 2 x 210 | | 2 x 300 | | 2 x 500 | | |
| Designation | | 2-surface disc brake in double configuration (2 brake circuits) | | | | | | |
| Brake Monitoring | | 1 microswitch per brake circuit | | | | | | |
| Protection Class | | IP 21 | | | | | | |
| Noise level | [dB(A)] | < 60 | | | | | | |
| Frequency inverter type | MFR | 5.5 | | | 7.5 | | | |
| | MFC | 21-15, 31-10 | | | 21-15, 31-15 | | | |

¹⁾ with standardised groove clearance RA 12 mm for d=6/6,5 and 14 mm for d=8 mm * The machine PMC125L is likely to be available from the 4th quarter of 2017 onwards. Subject to techn. modifications. For further information please refer to the current product catalog PMC125 drive

| Technical Data | | | | |
|--------------------------------|---------|---|-------|------------|
| Type of machine | | PMC145-2S | | PMC145-2XS |
| Suspension | r | 1:1 | 2:1 | |
| Rated Load | Q [kg] | 275 | 450 | |
| Rated Speed max. | v [m/s] | 1,0 | 1,6 | |
| Diameter of Traction Sheave | DT [mm] | 240 | | |
| Diameter of Ropes | d [mm] | 6 | | |
| Number of Grooves max. | z | 6 at groove clearance 12 mm / 7 at groove clearance 10 mm | | |
| Groove type | | seat / vee groove, hardened | | |
| Rated Power | PN [kW] | 1,59 | 2,8 | 4,4 |
| Rated Torque | MN [Nm] | 190 | 170 | 165 |
| Permitted radial Shaft Load | [kN] | 14 | | 15 |
| Weight | [kg] | 132 | | 158 |
| Number of Switching Operations | | 180 | | |
| Duty Cycle | % | 50 | | |
| Rated Current | IN [A] | 8,4 | 7,5 | 9,9 |
| Output Factor | cos φ | 0,92 | 0,91 | 0,96 |
| Designation | | 2 x 250 Nm, 2-surface disc brake in double configuration (2 brake circuits) | | |
| Brake Monitoring | | 1 microswitch per brake circuit | | |
| Protection Class | | IP 21 | | |
| Frequency inverter type | MFR | 5.5 | | |
| | MFC | 31-10 | 31-15 | |

Subject to techn. modifications. For further information please refer to the current product catalog PMC145-2 drive

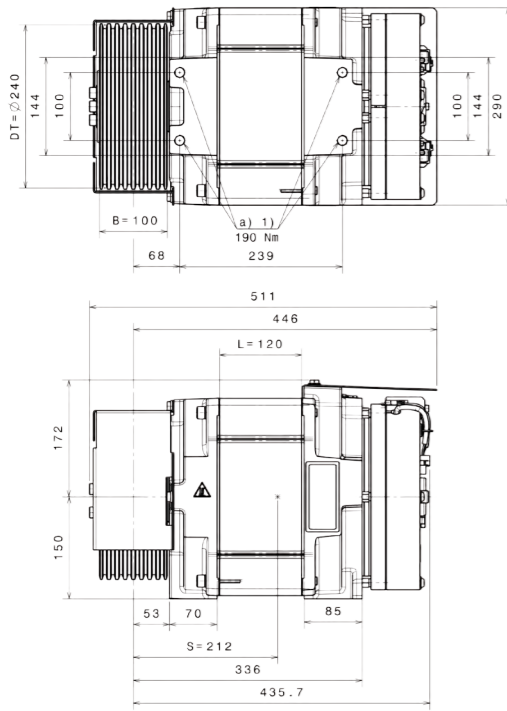
PMC145-2 M/XM



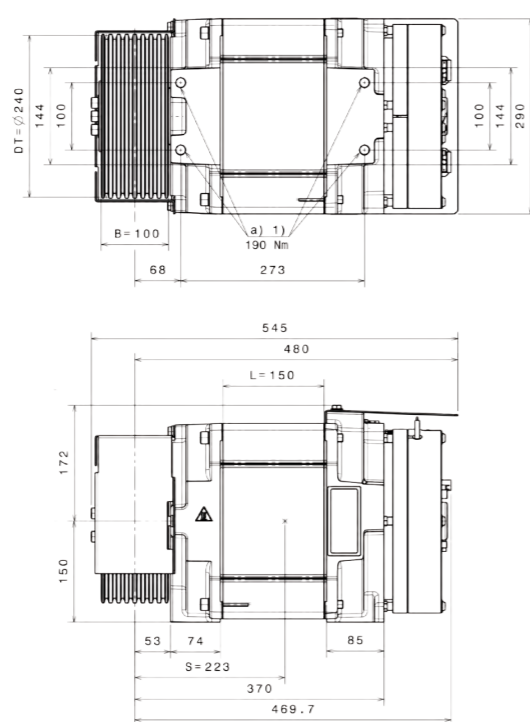
PMC145-2 L/XL

Gearless

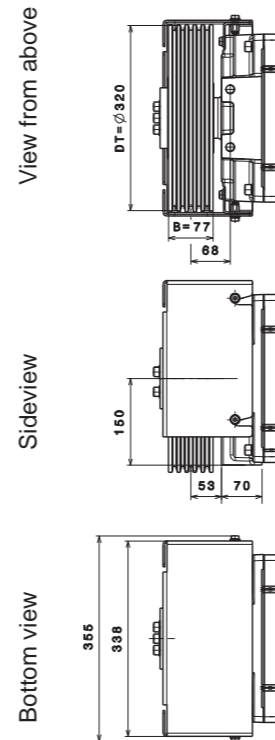
PMC145-2M



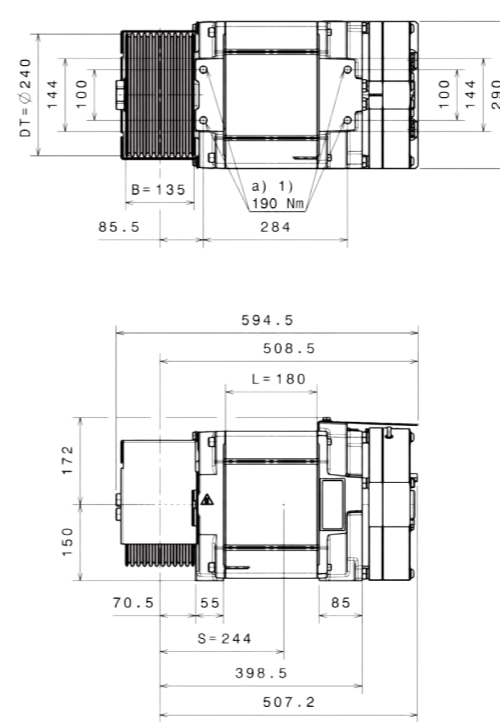
PMC145-2XM



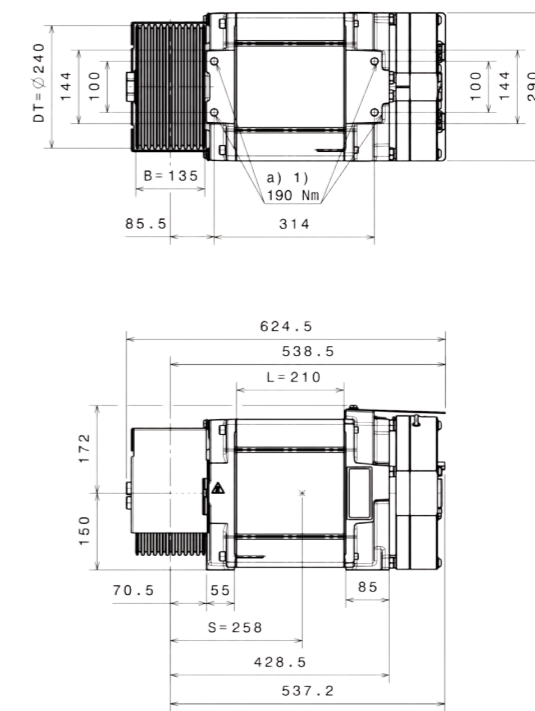
PMC145-2M



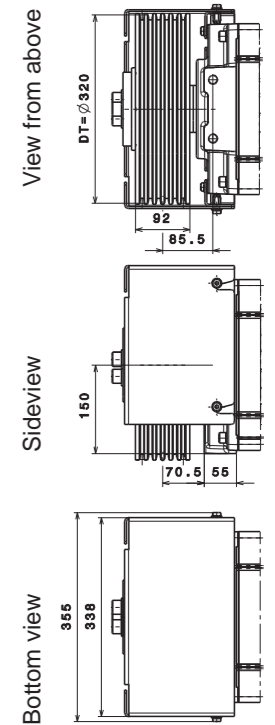
PMC145-2L



PMC145-2XL



PMC145-2L



Gearless

| Technical Data | | | | | | | | | | | |
|--------------------------------|---------|---|-------|------|------|------|------|------------|------|------|-----|
| Type of machine | | PMC145-2M | | | | | | PMC145-2XM | | | |
| Suspension | r | 1:1 | | | | | | 2:1 | | | |
| Rated Load | Q [kg] | 300 | 400 | | | 480 | 630 | | | | 450 |
| Rated Speed max. | v [m/s] | 1,0 | | 1,2 | | 1,0 | | 1,6 | 1,75 | 2,0 | |
| Diameter of Traction Sheave | DT [mm] | 320 | 240 | 210 | 240 | 320 | 240 | 210 | 240 | | 320 |
| Diameter of Ropes | d [mm] | 8 | 6 | | | | | | 8 | | |
| Number of Grooves max. | z | 5 | 8 / 9 | | | | | | 6 | | |
| Type of Groove | | seat / vee groove, hardened | | | | | | | | | |
| Rated Power | PN [kW] | 1,79 | 2,38 | 2,72 | 2,86 | 3,1 | 3,91 | 3,9 | 6 | 6,9 | 5,5 |
| Rated Torque | MN [Nm] | 285 | | | 245 | 235 | 205 | 225 | 236 | 220 | |
| Permitted radial Shaft Load | [kN] | 18 | | | | | | 19 | | | |
| Weight | [kg] | 185 | | | | | | 202 | | | |
| Number of Switching Operations | | 180 | | | | | | 240 | | | |
| Duty Cycle | % | 50 | | | | | | | | | |
| Rated Current | IN [A] | 11,5 | | | 9,9 | 9,5 | 8,3 | 14,8 | 15,6 | 13,9 | |
| Output Factor | cos φ | 0,94 | 0,93 | 0,92 | 0,93 | 0,94 | | 0,97 | 0,96 | | |
| Version of Brake | | 2 x 350 Nm, 2-surface disc brake in double configuration (2 brake circuits) | | | | | | | | | |
| Brake Monitoring | | 1 microswitch per brake circuit | | | | | | | | | |
| Protection Class | | IP 21 | | | | | | | | | |
| Frequency inverter type | MFR | 5.5 | | | | | | 7.5 | | | |
| | MFC | 21-15 / 31-15 | | | | | | | | | |

Subject to techn. modifications. For further information please refer to the current product catalog PMC145-2 drive

| Technical Data | | | | | | | | | | | | |
|--------------------------------|---------|---|--------------|------|------|------|--------------|---------------|------|------|-----|--|
| Type of machine | | PMC145-2L | | | | | | PMC145-2XL | | | | |
| Suspension | r | 1:1 | | | | | | 2:1 | | | | |
| Rated Load | Q [kg] | 500 | 630 | | | 800 | 1000 | | | | 630 | |
| Rated Speed max. | v [m/s] | 1,0 | | 1,2 | | 1,0 | | 1,6 | 1,75 | 2,0 | | |
| Diameter of Traction Sheave | DT [mm] | 320 | 240 | 210 | 240 | 320 | 240 | 210 | 240 | | 320 | |
| Diameter of Ropes | d [mm] | 8 | 6 | | | | | | 8 | 6 | | |
| Number of Grooves max. | z | 6 | 10 / 11 / 13 | | | 6 | 10 / 11 / 13 | | | | 6 | |
| Type of Groove | | seat / vee groove, hardened | | | | | | | | | | |
| Rated Power | PN [kW] | 2,76 | 3,69 | 4,2 | 4,42 | 4,7 | 6,01 | 6 | 9,4 | 10,2 | 8 | |
| Rated Torque | MN [Nm] | 440 | | | | 375 | 360 | 315 | 352 | 350 | 320 | |
| Permitted radial Shaft Load | [kN] | 32 | | | | | | 30 | | | | |
| Weight | [kg] | 225 | 216 | 214 | 216 | 225 | 216 | 214 | 229 | | 238 | |
| Number of Switching Operations | | 180 | | | | | | | | | | |
| Duty Cycle | % | 40 | | | | | | 50 | | | | |
| Rated Current | IN [A] | 18,3 | | | 15,5 | 14,9 | 13 | 24,7 | 24,6 | 22,4 | | |
| Output Factor | cos φ | 0,93 | 0,94 | 0,93 | | 0,92 | | 0,95 | 0,96 | | | |
| Version of Brake | | 2 x 550 Nm, 2-surface disc brake in double configuration (2 brake circuits) | | | | | | | | | | |
| Brake Monitoring | | 1 microswitch per brake circuit | | | | | | | | | | |
| Protection Class | | IP 21 | | | | | | | | | | |
| Frequency inverter type | MFR | 7.5 | | | | | | 18 | | | | |
| | MFC | 21-15 / 31-15 | | | | | | 21-32 / 31-26 | | | | |

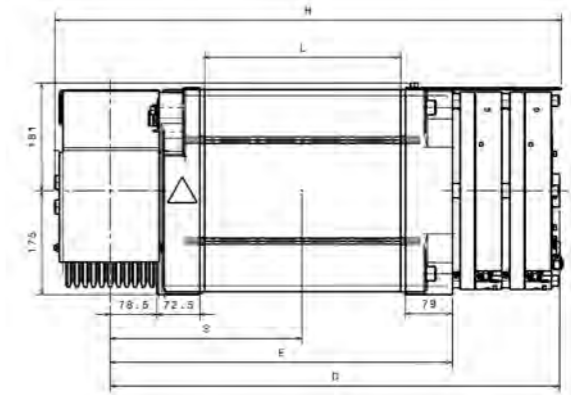
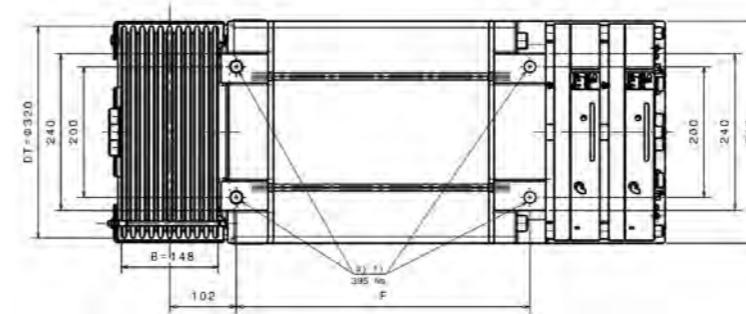
Subject to techn. modifications. For further information please refer to the current product catalog PMC145-2 drive

Own Notes

PMC170 S - XL



EN 81-
20/-50
-conform



| Dimensions | | | | | | | |
|------------|--------|--------|--------|--------|--------|--------|--------|
| | L (mm) | D (mm) | E (mm) | F (mm) | H (mm) | S (mm) | G (kg) |
| PMC170S | 180 | 613 | 426 | 300 | 706 | 273 | 381 |
| PMC170M | 240 | 673 | 486 | 360 | 766 | 304 | 423 |
| PMC170L | 270 | 703 | 516 | 390 | 796 | 319 | 448 |
| PMC170XL | 330 | 763 | 576 | 450 | 856 | 350 | 492 |

| Technical Data | | | | | | |
|--------------------------------|---------|---|---------|---------|----------|------|
| Type of machine | | PMC170S | PMC170M | PMC170L | PMC170XL | |
| Suspension | r | 2:1 | | | | |
| Rated Load | Q [kg] | 1050 | 1650 | | | |
| Rated Speed max. | v [m/s] | 1,6 | 1,0 | 1,6 | 1,75 | 2,0 |
| Diameter of Traction Sheave | DT [mm] | 320 | | | | |
| Diameter of Ropes | d [mm] | 8 | | | | |
| Number of Grooves max. | z | 10 | | | | |
| Type of Groove | | seat / vee groove, hardened | | | | |
| Rated Power | PN [kW] | 9,7 | 9,8 | 15,6 | 17,1 | 19,5 |
| Rated Torque | MN [Nm] | 485 | 781 | | | |
| Permitted radial Shaft Load | [kN] | 30 | 42 | 40 | 42 | |
| Weight | [kg] | 381 | 423 | 448 | 492 | |
| Number of Switching Operations | | 180 | | | | 240 |
| Duty Cycle | % | 50 | | | | |
| Rated Current | IN [A] | 23 | 27 | 40 | 45 | |
| Output Factor | cos φ | 0,95 | 0,94 | 0,95 | 0,94 | |
| Version of Brake | | 2 x 1200 Nm, 2-surface disc brake in double configuration | | | | |
| Brake Monitoring | | 1 microswitch per brake circuit | | | | |
| Protection Class | | IP 21 | | | | |
| Frequency inverter type | MFR | 18 | | | | -- |
| | MFC | 31-26 | 31-40 | | 31-60 | |

Subject to techn. modifications. For further information please refer to the current product catalog PMC170 drive

DAF270S

EN 81-
20/-50
-conform



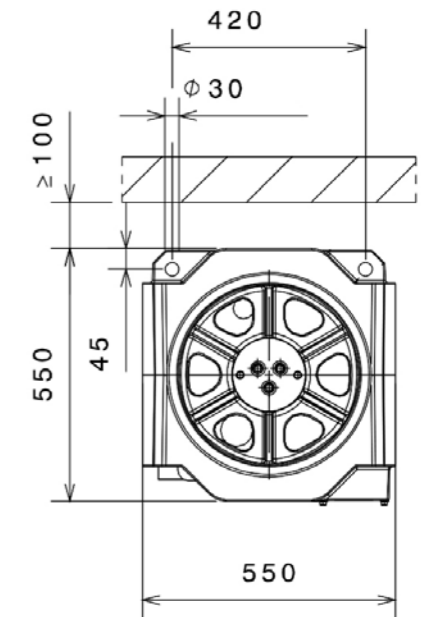
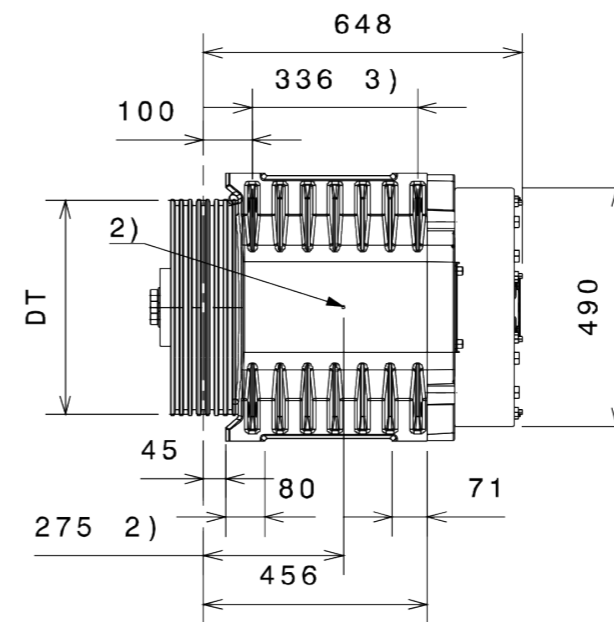
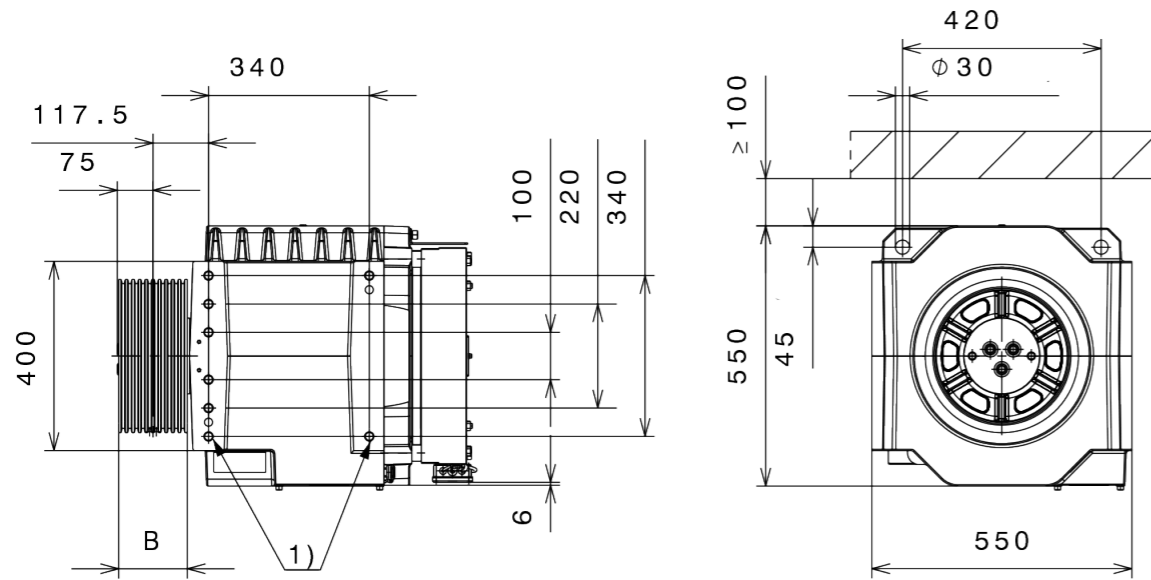
EN 81-
20/-50
-conform



DAF270M

Gearless

Gearless



| Technical Data | | | | | | |
|--------------------------------|---------|---|-------|------|--------|------|
| Type of machine | | DAF270S | | | | |
| Suspension | r | 2:1 | | | | |
| Rated Load | Q [kg] | 1250 | | | | |
| Rated Speed max. | v [m/s] | 1,0 | 1,6 | 1,75 | 2,0 | 2,5 |
| Diameter of Traction Sheave | DT [mm] | 320 | | | | |
| Diameter of Ropes | d [mm] | 8 | | | | |
| Number of Grooves max. | z | 10 | | | | |
| Type of Groove | | seat / vee groove, hardened | | | | |
| Rated Power | PN [kW] | 8 | 12,6 | 13,8 | 15 | 17,8 |
| Rated Torque | MN [Nm] | 640 | 630 | | 600 | 570 |
| Permitted radial Shaft Load | [kN] | 43,5 | | | | |
| Weight incl. traction sheave | [kg] | 475 | | | | |
| Number of Switching Operations | [F/h] | 240 | | | | |
| Duty Cycle | [%] | 50 | | | | |
| Rated Current | IN [A] | 23 | 30,7 | | 29,2 | 27,8 |
| Output Factor | cos φ | 0,94 | 0,95 | | 0,96 | |
| Version of Brake | | 2-surface disc brake in double configuration 2x1700 Nm option: with manual release | | | | |
| Brake Monitoring | | 1 microswitch per brake circuit | | | | |
| Protection Class | | IP20, optional IP54 | | | | |
| Frequency inverter type | MFR | 18 | | | -- | |
| | MFC | 31-26 | 31-40 | | 21-50R | |

Subject to techn. modifications. For further information please refer to the current product catalog Mini gearless DAF270

| Technical Data | | | | | | | | | | | | | | | | | | | |
|--------------------------------|---------|--|------|-----------|-------|------|---------|-------|------|-----------|-----------|-------|-----------|-----------|--------|-------|-----------|-----------|------|
| Type of machine | | DAF270M | | | | | | | | | | | | | | | | | |
| Suspension | r | 1:1 | | | | | | 2:1 | | | | | | | | | | | |
| Rated Load | Q [kg] | 900 | 800 | 1000 | 900 | 800 | 1000 | 1350 | 1600 | 2000 | 1350 | 1600 | 1350 | 1600 | 1150 | 1350 | 1600 | | |
| Rated Speed max. | v [m/s] | 1,0 | | | 1,6 | | | 1,0 | | | 1,6 | | | 1,75 | | 2,0 | | 2,5 | |
| Diameter of Traction Sheave | DT [mm] | 440 | 320 | 440 | 320 | 520 | 320/440 | 520 | 440 | 520 | 440 | 520 | 440 | 520 | 440 | 520 | 440 | | |
| Diameter of Ropes | d [mm] | 8-11 | | | | | | | | | | | | | | | | | |
| Number of Grooves max. | z | 7-9 | | | | | | | | | | | | | | | | | |
| Type of Groove | | seat / vee groove, hardened | | | | | | | | | | | | | | | | | |
| Rated Power | PN [kW] | 5,4/7,4 | | 7,8/10,6 | | | 9 | 10,7 | 11,4 | 13 | 15,3/14,9 | | 14,2 | 16,3/16,7 | 15,8 | 18,2 | 16,6 | 19,5 | 21,6 |
| Rated Torque | MN [Nm] | 1200/1175 | | 1075/1050 | | | 1175 | 1175 | 1250 | 1050 | 1050/1025 | 1050 | 1025/1050 | 1025 | 1000 | 860 | 860 | 950 | |
| Permitted radial Shaft Load | [kN] | 43,5/58 | | | | | | | | | | | | | | | | | |
| Weight incl. traction sheave | [kg] | 550/570 | | | | | | | | | | | | | | | | | |
| Number of Switching Operations | | 180 | 240 | 180 | 240 | | | 180 | 240 | | | | | | | | | 180 | |
| Duty Cycle | % | 40 | 50 | 40 | 50 | | | 40 | 50 | | | | | | | | | | |
| Rated Current | IN [A] | 27,5 | 24,5 | 24 | 25 | 22 | 30 | 24 | 24 | 25,5 | 30 | 30/35 | 30 | 35/30,5 | 35 | 38/29 | 32,7 | 41,5/28,5 | 31,4 |
| Output Factor | cos φ | 0,96 | 0,94 | 0,92 | 0,93 | 0,95 | 0,94 | 0,94 | 0,95 | 0,95/0,94 | 0,95 | | | 0,96/0,95 | | 0,96 | 0,95/0,96 | 0,96 | |
| Version of Brake | | 2-surface disc brake in double configuration 2x1250 / 2x1700 Nm option: with manual release | | | | | | | | | | | | | | | | | |
| Brake Monitoring | | 1 microswitch per brake circuit | | | | | | | | | | | | | | | | | |
| Protection Class | | IP20, optional IP54 | | | | | | | | | | | | | | | | | |
| Frequency inverter type | MFR | 18 | | | | | | | | | | | | -- | | | | | |
| | MFC | 31-26/40 | | | 31-26 | | | 31-40 | | | 31-48 | | 31-60 | | 21-50R | | | | |

Subject to techn. modifications. For further information please refer to the current product catalog Mini gearless DAF270

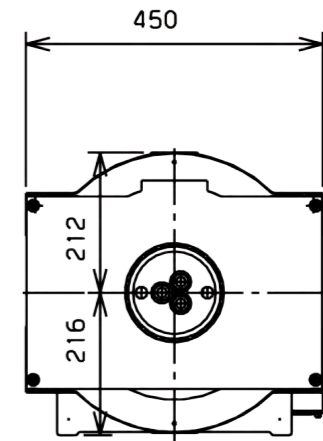
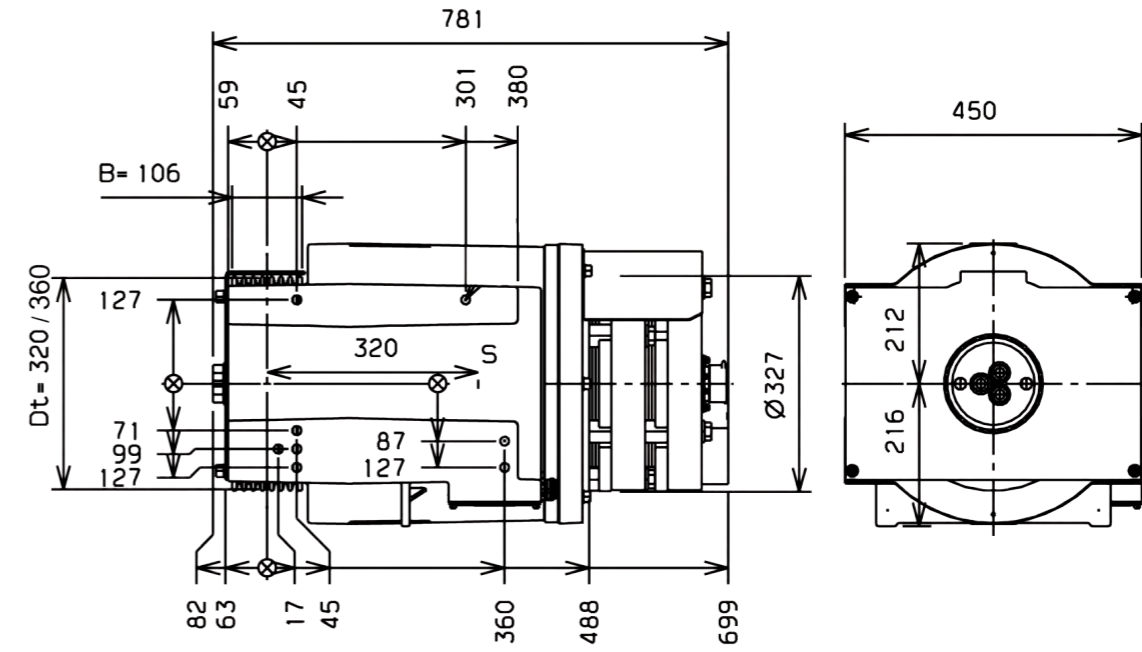
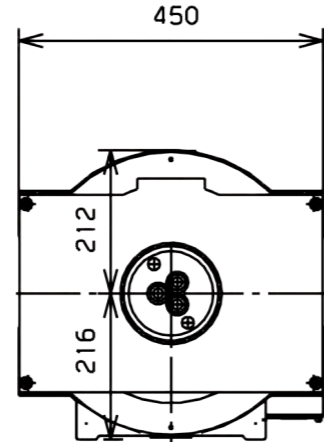
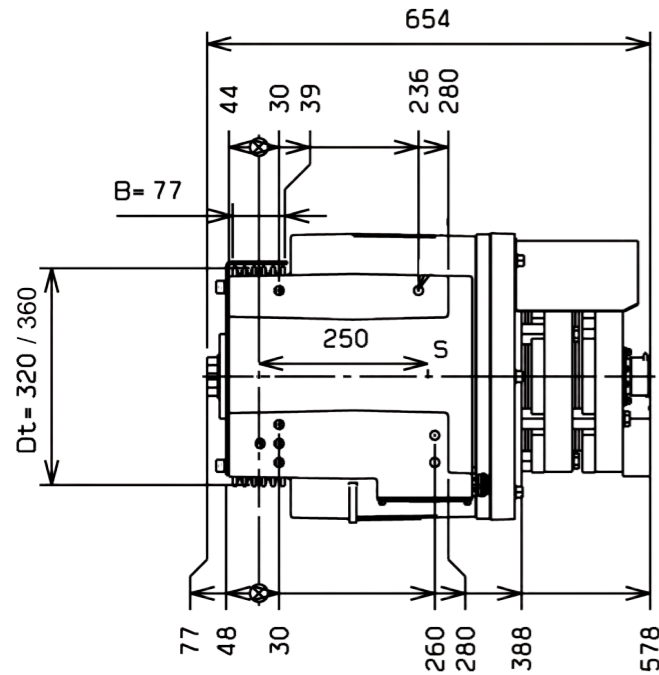
DAF210M

EN 81-
20/-50
-conform



DAF210L

EN 81-
20/-50
-conform



| Technical Data | | | | | | | | | |
|--------------------------------|---------------|---|-------|------|-------|------|-------|------|-------|
| Type of machine | DAF210M | | | | | | | | |
| Suspension | r | 1:1 | | | 2:1 | | | | |
| Rated Load | Q [kg] | 450 | 630 | 700 | 630 | 700 | 630 | 700 | 630 |
| Rated Speed max. | v [m/s] | 1,0 | 1,6 | 1,0 | 1,6 | 1,75 | 2,0 | | |
| Diameter of Traction Sheave | DT [mm] | 320 | 360 | 320 | 360 | 320 | 360 | 320 | 360 |
| Diameter of Ropes | d [mm] | 8 | 8 / 9 | 8 | 8 / 9 | 8 | 8 / 9 | 8 | 8 / 9 |
| Number of Grooves max. | z | 5 | 5 / 4 | 5 | 5 / 4 | 5 | 5 / 4 | 5 | 5 / 4 |
| Type of Groove | | seat / vee groove, hardened | | | | | | | |
| Rated Power | PN [kW] | 2,83 | 4,3 | 4,2 | 4,7 | 6,8 | 7,3 | 7,2 | 7,9 |
| Rated Torque | MN [Nm] | 450 | 430 | 378 | 380 | 382 | 365 | 370 | 360 |
| Permitted radial Shaft Load | [kN] | 33 (≤ 75 1/min) / 37 (> 75 1/min) | | | | | | | |
| Weight | [kg] | 250 | | | | | | | |
| Number of Switching Operations | | 240 | 180 | 240 | | | | | |
| Duty Cycle | % | 50 | 60 | 50 | | | | | |
| Rated Current | IN [A] | 12,5 | 12,0 | 10,5 | 16,1 | 16,2 | 17,4 | 15,4 | 17,2 |
| Output Factor | cos φ | 0,94 | 0,95 | 0,96 | 0,95 | | | | |
| Version of Brake | | 2-surface disc brake in double configuration (2 brake circuits) | | | | | | | |
| Brake Monitoring | | 1 microswitch per brake circuit | | | | | | | |
| Protection Class | | IP 20 | | | | | | | |
| Frequency inverter type | MFR | 5.5 | | | 7.5 | | | | |
| | MFC | 31-15 | | | 31-26 | | | | |

Subject to techn. modifications. For further information please refer to the current product catalog Mini gearless DAF210

| Technical Data | | | | | | | |
|--------------------------------|---------------|---|-------------------|----------------------|---------------------|-----------|------|
| Type of machine | DAF210L | | | | | | |
| Suspension | r | 1:1 | | 2:1 | | | |
| Rated Load | Q [kg] | 630 | 630/900/1000/1125 | 630/900/1000/1125 | 1125 | 1000 | |
| Rated Speed max. | v [m/s] | 1,0 | 1,6 | 1,0 | 1,6 | 1,75 | 2,0 |
| Diameter of Traction Sheave | DT [mm] | 320 | 520/400/360/320 | 520/400/360/320 | 320 | 360 | |
| Diameter of Ropes | d [mm] | 8 | 8-13 | | | | |
| Number of Grooves max. | z | 7 | 5-8 | | | | |
| Type of Groove | | seat / vee groove, hardened | | | | | |
| Rated Power | PN [kW] | 4,10 | 5,75 | 4,7/5,9/6,6/6,5/7,5 | 7,4/9,5/10,5/11,5 | 11,3/12,4 | 12,5 |
| Rated Torque | MN [Nm] | 650 | 575 | 610/590/586/520/600 | 600/595/590/575 | 580/565 | 563 |
| Permitted radial Shaft Load | [kN] | for 320-, 360- and 400-traction sheave 38 (≤ 75 1/min) / 46 (> 75 1/min) for 520-traction sheave 37 (≤ 75 1/min) / 41 (> 75 1/min) | | | | | |
| Weight | [kg] | 320/325/330 | | | | | |
| Number of Switching Operations | | 240 | | | | | |
| Duty Cycle | % | 50 | | | | | |
| Rated Current | IN [A] | 16,0 | 14,0 | 15,4/15/15,2/13/16,8 | 23,4/23,2/23,0/25,5 | 25,7/25,1 | 25,0 |
| Output Factor | cos φ | 0,94 | 0,95 | 0,96/0,94/0,95 | 0,96/0,95/0,95 | 0,95/0,96 | 0,96 |
| Version of Brake | | 2-surface disc brake in double configuration (2 brake circuits) | | | | | |
| Brake Monitoring | | 1 microswitch per brake circuits | | | | | |
| Protection Class | | IP 20 | | | | | |
| Frequency inverter type | MFR | 7.5 | | | 18 | | |
| | MFC | 31-15 | | 31-26/40 | | 31-40 | |

Subject to techn. modifications. For further information please refer to the current product catalog Mini gearless DAF210

DAF270L

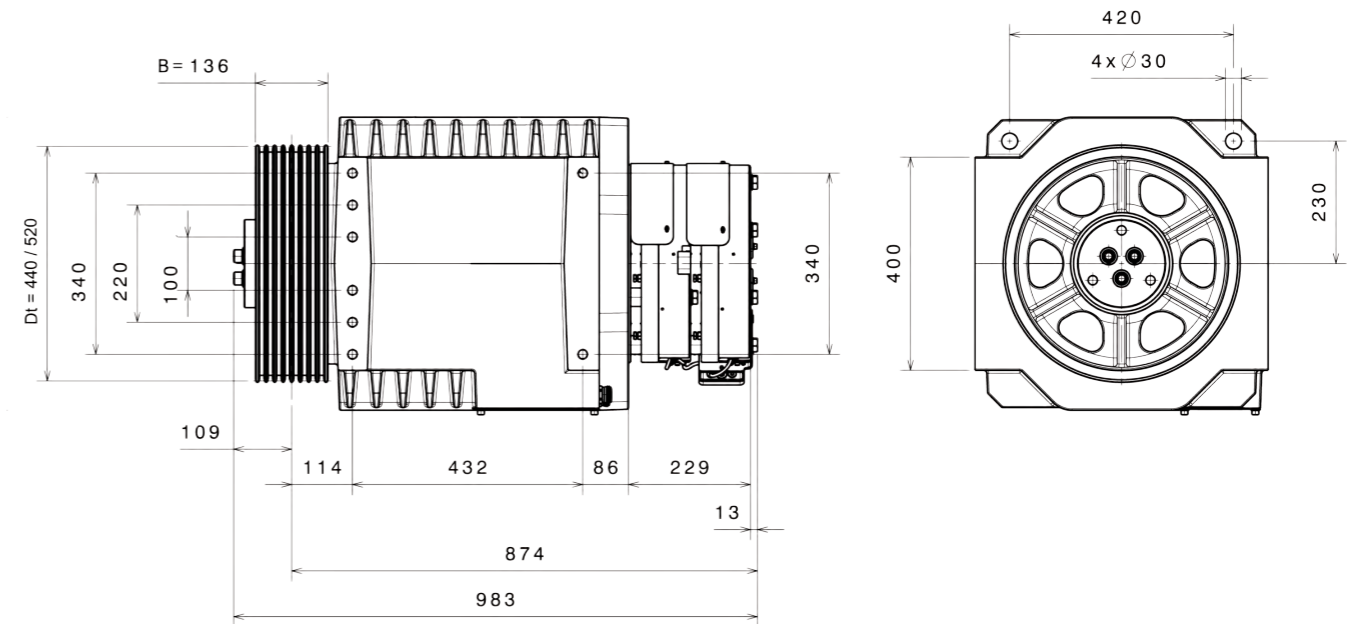
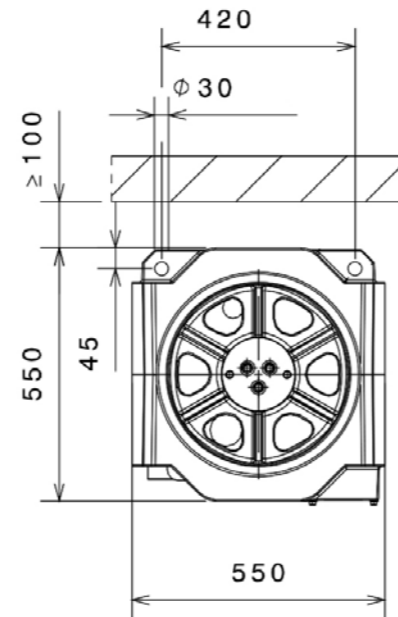
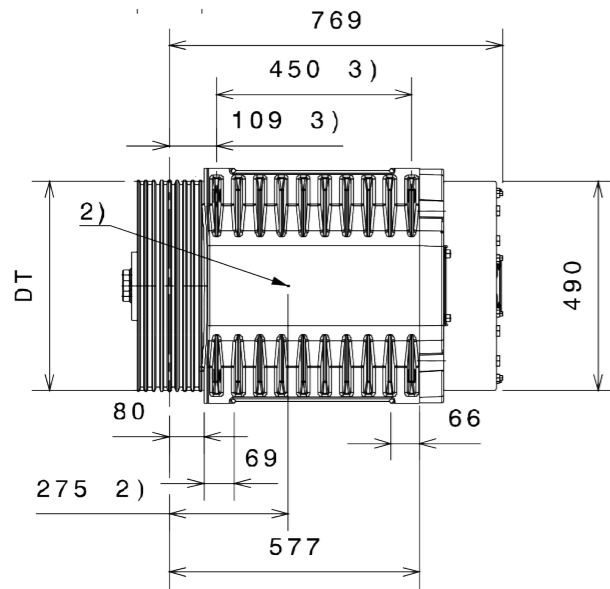
EN 81-
20/-50
-conform



EN 81-
20/-50
-conform

DAF270XL

Option: with manual release



Technical Data

| Type of machine | | DAF270L | | | | | | | | | |
|--------------------------------|---------|--|----------------|--------------------|----------------|------|------|------|---------------|------|-----------|
| Suspension | r | 1:1 | | | | | 2:1 | | | | |
| Rated Load | Q [kg] | 1100/1000 | 2000/2250/2500 | | 1900 | 2000 | 1900 | 1900 | 2200/2000 | 1700 | 1800/2000 |
| Rated Speed max. | v [m/s] | 1,0/1,6 | 1,0 | 1,6 | 1,75 | 1,8 | 2,0 | | 2,5 | | |
| Diameter of Traction Sheave | DT [mm] | 440 | 490/440 | | 520 | 490 | 520 | 520 | 440/490 | 520 | 490/440 |
| Diameter of Ropes | d [mm] | 8-11 | | 8-12 | | | | | | | |
| Number of Grooves max. | z | 7 | | 6-10 | | | | | | | |
| Type of Groove | | seat / vee groove, hardened | | | | | | | | | |
| Rated Power | PN [kW] | 6,6/10,1 | 11,7/12,8/14,6 | 18/20,4/23,3 | 1,8 | 20 | 19,4 | 21,2 | 24,6/22,5 | 25,1 | 26,5/30 |
| Rated Torque | MN [Nm] | 1475/1400 | 1433/1400/1600 | 1375/1400/1600 | 1400 | 1400 | 1400 | 1375 | 1350/1375 | 1300 | 1300/1325 |
| Permitted radial Shaft Load | [kN] | 58 | | | | | | | | | |
| Weight | [kg] | 730/740 | | | | | | | | | |
| Number of Switching Operations | | 240 | 240/180 | | 180 | | 240 | | 240/180 | | |
| Duty Cycle | % | 50 | | 50/40 | | 50 | | | | | |
| Rated Current | IN [A] | 26/24,5 | 25/36/41/28 | 42,5/43,5/36/50/41 | 43,5 | 43,5 | 43,5 | 60 | 41,5/60/35/60 | 58 | 58/40/59 |
| Output Factor | cos φ | 0,96 | 0,96/0,95 | 0,96/0,94 | 0,95 | | | 0,96 | | | |
| Version of Brake | | 2-surface disc brake in double configuration 2x1700 option: with manual release | | | | | | | | | |
| Brake Monitoring | | 1 microswitch per brake circuit | | | | | | | | | |
| Protection Class | | IP20, optional IP54 | | | | | | | | | |
| Frequency inverter type | MFR | 18 | 18 / -- | 18 | -- | | | | | | |
| | MFC | 31-40 | 31-60 | 31-60 | 31-60 / 21-105 | | | | | | |

Subject to techn. modifications. For further information please refer to the current product catalog Mini gearless DAF270

Technical Data

| Type of machine | | DAF270XL | | | | | | | | |
|--------------------------------|---------|--|---------------------|----------------|---------|---------|--------------|-----------|------|------|
| Suspension | r | 1:1 | | 2:1 | | | 3:1 | | 4:1 | |
| Rated Load | Q [kg] | 1100/1000 | 1800/2000/2250/2500 | | | 2200 | 2000 | 4000/3400 | | 4000 |
| Rated Speed max. | v [m/s] | 1,0/1,6 | 1,0 | 1,6 | 2,0 | 2,5 | 1,0/1,6 | | 1,0 | |
| Diameter of Traction Sheave | DT [mm] | 440 | 520*440 | | | 440 | | | | |
| Diameter of Ropes | d [mm] | 8-11 | | 8-13 | | | | | | |
| Number of Grooves max. | z | 7 | | 6-10 | | | | | | |
| Type of Groove | | seat / vee groove, hardened | | | | | | | | |
| Rated Power | PN [kW] | 6,6/10,1 | 12,2/12,8/14,6 | 17,3/20,4/23,3 | 24,6 | 30 | 22,5/30,5 | 25,1 | | |
| Rated Torque | MN [Nm] | 1475/1400 | 1400/1600 | | | 1350 | 1325 | 1650/1400 | | 1380 |
| Permitted radial Shaft Load | [kN] | 73 | | | | | | | | |
| Weight | [kg] | 770/780 | | | | | | | | |
| Number of Switching Operations | | 240 | 240/180 | | 240 | 240/180 | | 180 | | |
| Duty Cycle | % | 50 | | 50/40 | | 50 | | 50/40 | | 40 |
| Rated Current | IN [A] | 26/24,5 | 36/41/28 | 43,5/36/50/41 | 41,5/60 | 59 | 42,5/51,5/62 | | 56 | |
| Output Factor | cos φ | 0,96 | 0,96/0,95 | 0,96/0,94 | 0,96 | 0,93 | 0,96/0,94 | | 0,96 | |
| Version of Brake | | 2-surface disc brake in double configuration 2x2200 option: with manual release | | | | | | | | |
| Brake Monitoring | | 1 microswitch per brake circuit | | | | | | | | |
| Protection Class | | IP20, optional IP54 | | | | | | | | |
| Frequency inverter type | MFR | -- | | | | | | | | |
| | MFC | 31-40 | | 31-60 | 31-60 | | 21-105 | | | |

Subject to techn. modifications. For further information please refer to the current product catalog Mini gearless DAF270

Machine base frame for PMC - Gearless

Machine base frame for DAF - Gearless

ModKit MO61 S / E



ModKit MO61 D4



For more information see description ModKit MO61S / E

For more information see description ModKit MO61 D4

| Technical Data | | | | |
|---|---------|-----------------------------|------------------------------|----------------------|
| Frame | | ModKit MO 61 S* | ModKit MO 61 E | MODKit MO61 D4 |
| Machine | | PMC145-2 M, L | PMC125 M, L PMC145-2 M, L | PMC145-2 M, L, XL |
| Suspension | r | 1:1 | | 2.1 |
| Rated load | Q [kg] | up to 675 | bis 630 | up to 630 up to 1000 |
| Rated speed | v [m/s] | 1,0 | | up to 1,6 |
| Rope departure at drive flexible | [mm] | from 555 to 765 | from 595 to 1206 | 600 ≤ ASL ≤ 1400 |
| Diameter of traction sheave | DT [mm] | 210 / 240 | | 240 |
| Diameter of ropes | d [mm] | 6 / 6,5 | 6 / 6,5 / 8 | 6 / 6,5 |
| Number of ropes max. | | 12 | | |
| Number of grooves max. | z | 12 | | |
| Type of groove | | seat / vee groove, hardened | | |
| Pulley diameter | DT [mm] | 240 | 150 / 240 | 240 |
| Vibration isolation elements | | Yes | | |
| Integrated rope end fastening points, rope anchorages | | No (1:1) | | Yes |
| Manual release, optional | | Yes | | |
| Hoist | | No | | Yes |

* ▶ Pre-assemble machine base frame on stock
▶ Machine available from stock

DAF210 on TW63B machine base frame



DAF270 on machine base frame



| Technical Data | | | | |
|------------------------------|---------|-----------------------------------|------------|---|
| Frame | | DAF210 on TW63 machine base frame | | DAF270 on machine base frame |
| Machine | | DAF210M | DAF210L | DAF270S/M/L |
| Suspension | r | 1:1 | | |
| ASL-dimension flexible* | [mm] | 481 - 1073 | 501 - 1097 | 515 - 1265 |
| Diameter of traction sheave | DT [mm] | 320 / 360 | 360 / 400 | 320 / 440 / 520 |
| Diameter of ropes | d [mm] | 8 / 10 | | 8 / 10 / 11 |
| Vibration isolation elements | | Yes | | |
| Adapter plat | | Yes | | depending on the traction sheave diameter |
| Rope guard optional | | Yes | | |
| Manual release optional | | Yes | | |

* ASL-dimension is dependent on the traction sheave

Further special frames on request. Contact us!

