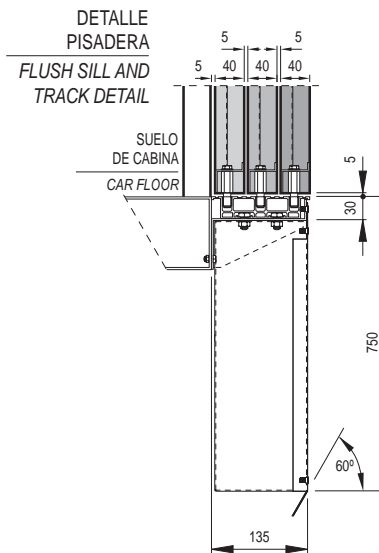
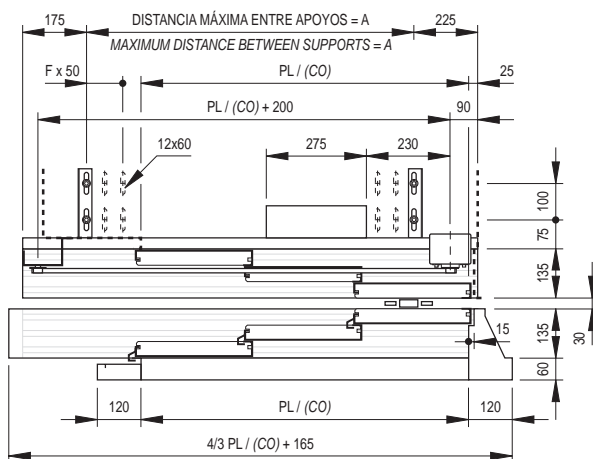
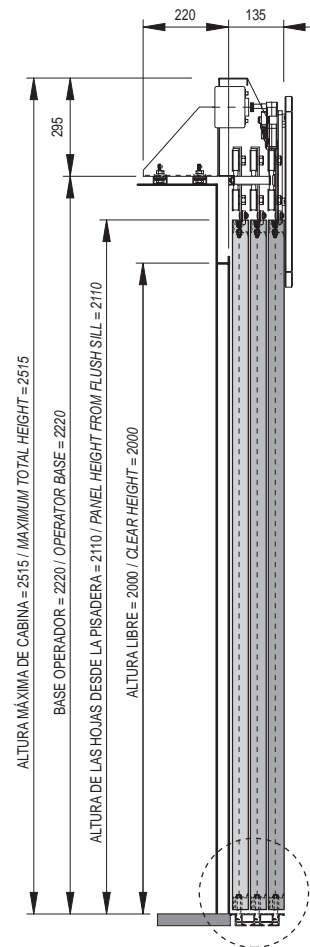
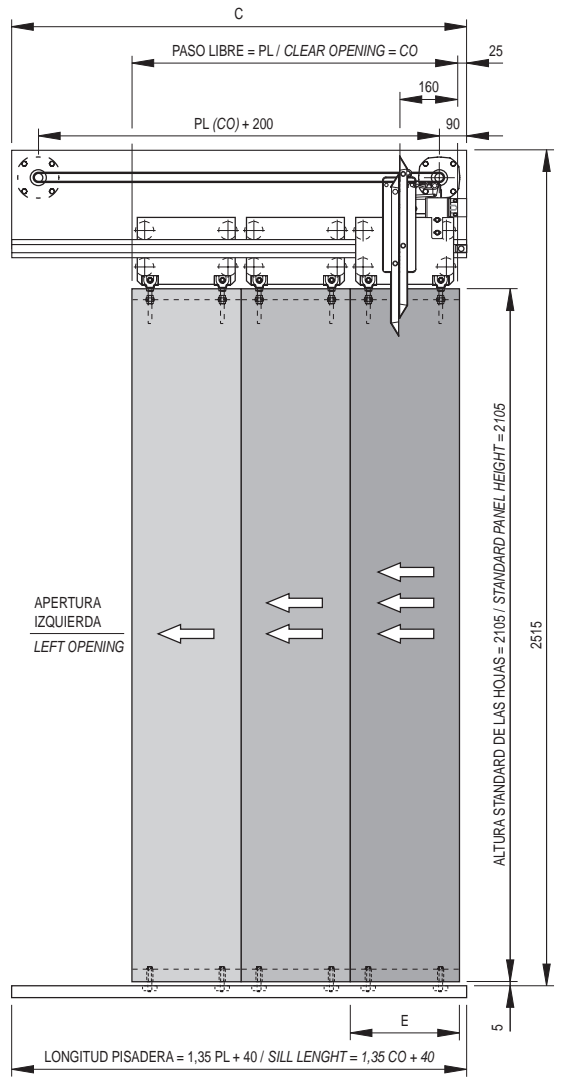
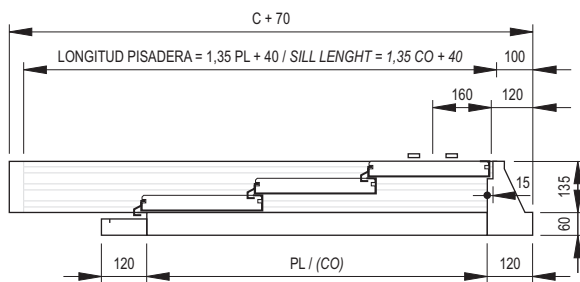
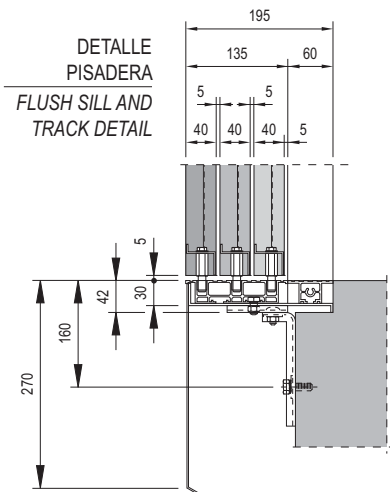
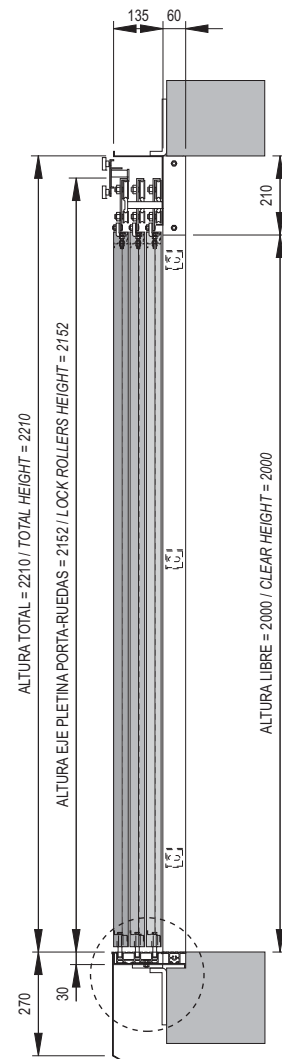
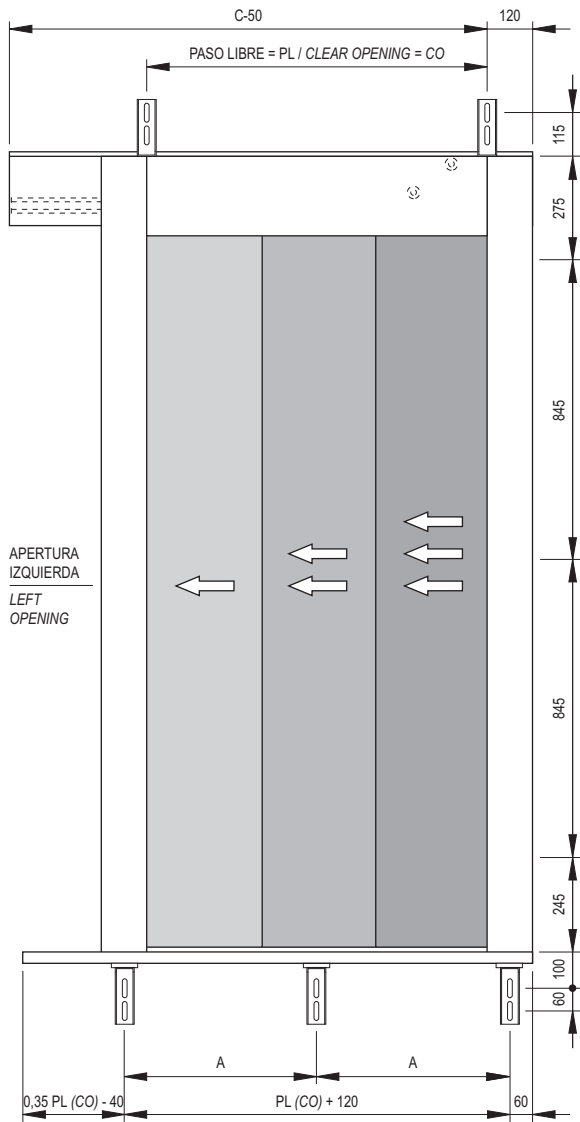


A partir de PL 1400, puerta de cabina con dos motores
From a CO 1400, cabin door with two motors



PL / CO	Un Motor / One Motor											Dos Motores / Two Motors							
	600	650	700	750	800	850	900	1000	1100	1200	1300	1400	1500	1600	1700	1800	1900	2000	
A	495	545	595	645	720	795	845	995	1145	1295	1395	1545	1695	1795	1945	2045	2195	2345	
C	895	945	995	1045	1120	1195	1245	1395	1545	1695	1795	1945	2095	2195	2345	2445	2595	2745	
E	220	235	253	270	285	305	320	352	385	420	453	485	520	553	585	620	653	685	
F	4	4	4	4	4	4	4	4	4	5	5	6	6	6	6	6	6	6	
TIEMPO / TIME (s)	1,56	1,62	1,68	1,74	1,8	1,85	1,91	2,01	2,11	2,2	2,3	2,4	2,5	2,6	2,7	2,8	2,9	3	
PESO / WEIGHT (kg)	57	61,5	66	71	75,5	80,5	85	94,5	104	113,5	123	132,5	142	151	160,5	170	179,5	189	

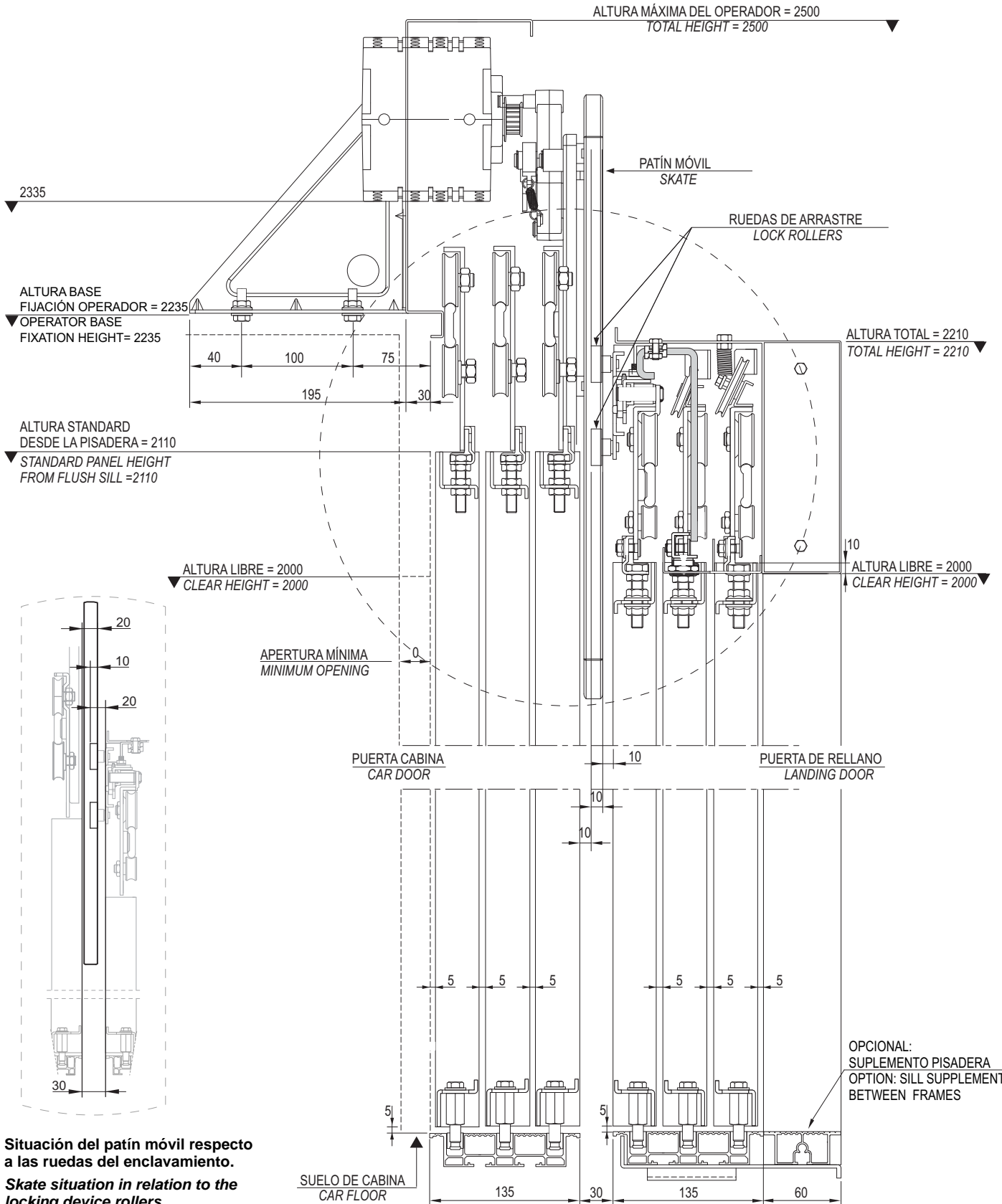


PL / CO	600	650	700	750	800	850	900	1000	1100	1200	1300	1400
A	360	385	410	435	460	485	340	373	407	330	355	380
C	895	962	1030	1095	1160	1227	1295	1430	1560	1695	1830	1960
S	3	3	3	3	3	3	4	4	4	5	5	5
T	5	5	5	5	5	5	6	6	6	7	7	7

S: N°. de soportes en apoyo pisadera.
S: Number of supports for sill support.

T: N°. de soportes total.
T: Total number of supports.

Puerta rellano telescópica 3 hojas modelo 40/10 (pisadera 135mm)
3 panel side opening landing door model 40/10 (sill 135mm)



Situación del patín móvil respecto a las ruedas del enclavamiento.
Skate situation in relation to the locking device rollers.

Puerta de rellano telescópica 3 hojas modelo 40/10 (pisadera 90mm)
3 panel side opening landing door model 40/10 (sill 90mm)

